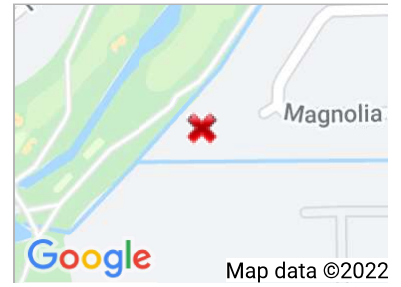


## CLIENT ALL FIELDS DETAIL



**MLS Number** 329200  
**Address Display** 644 Magnolia Circle GulfShores AL 36542  
**List Price** \$199,900  
**Status** Active  
**Days On Market** 2  
**List Dt** 4/16/2022



## PROPERTY DETAIL

<b>Tax PPIN #</b>	114581	<b>Property Taxes</b>	633.60
<b>Address</b>	644 Magnolia Circle	<b>Subdivsn or Commnty</b>	
<b>City</b>	Gulf Shores	<b>Class</b>	Lots and Land
<b>State</b>	AL	<b>Property Type</b>	Residential Lots
<b>Zip Code</b>	36542	<b>Lot Type</b>	Cul-de-Sac
<b>Intersecting Street</b>		<b>Ownership Type</b>	Whole/Full
<b>County</b>	Baldwin	<b>Named Waterfrnt Y/N</b>	No
<b>Area</b>	Gulf Shores 1	<b>Body of Water</b>	
<b>Lot/Block/Unit</b>	9	<b>Apx Acreage</b>	
<b>Fairhope Single Tax</b>	No	<b>Lot Size</b>	37x257
<b>Association Fees</b>	0	<b># Lots</b>	
<b>Associate Fees Frequency</b>		<b>Section/Township/Range</b>	
<b>Additional Amenity Fees</b>		<b>Road Frontage</b>	
<b>IncM Producing Potential</b>	No		
<b>Elementary School</b>	Gulf Shores Elementary		
<b>Middle School</b>			
<b>Intermediate School</b>			
<b>High School</b>	Gulf Shores		
<b>Restrictive Covenants</b>			

## REMARKS/DIRECTIONS

**Public Remarks** Incredibly rare nearly 3/4 acre lot on the 18th fairway of the Gulf Shores Golf Course! Right in the middle of town convenient to all Gulf Shores has to offer. Build your dream home now!

**Directions** Hwy 59 South to Clubhouse Drive, continue onto Regency Road, Magnolia Circle will be on the right.

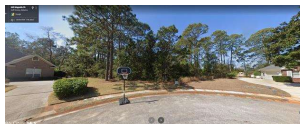
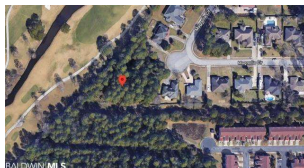
## FEATURES

<b>Boat Facilities</b>	<b>Lot Description</b>	<b>Utilities</b>	<b>Water Property Type</b>
None	Less than 1 acre	Baldwin EMC	No Waterfront
<b>Community Amenities</b>	<b>Terms of Sale</b>	<b>View</b>	
None	Cash Conventional	Golf Course View	

## SOLD/CLOSING

**Close Date**  
**Selling Price**  
**Sold Price Per ACRE**

## ADDITIONAL PICTURES



## DISCLAIMER

This information is deemed reliable, but not guaranteed.